

# MONTHLY MEMBERSHIP PROGRESS REPORT

LOCATION INDIA

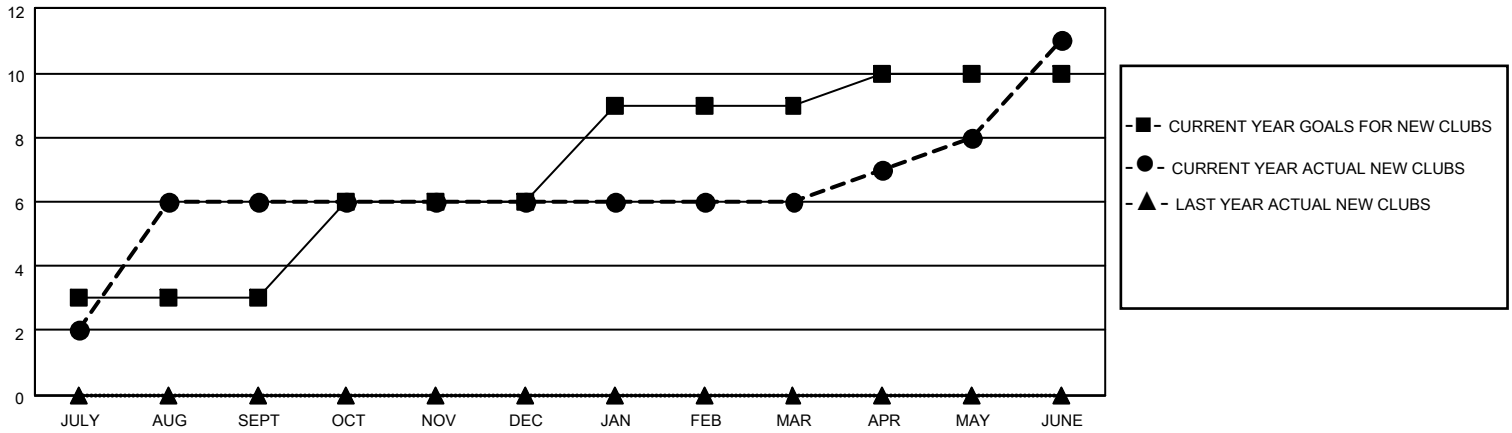
District 324 M

Results as of: 6/30/2022

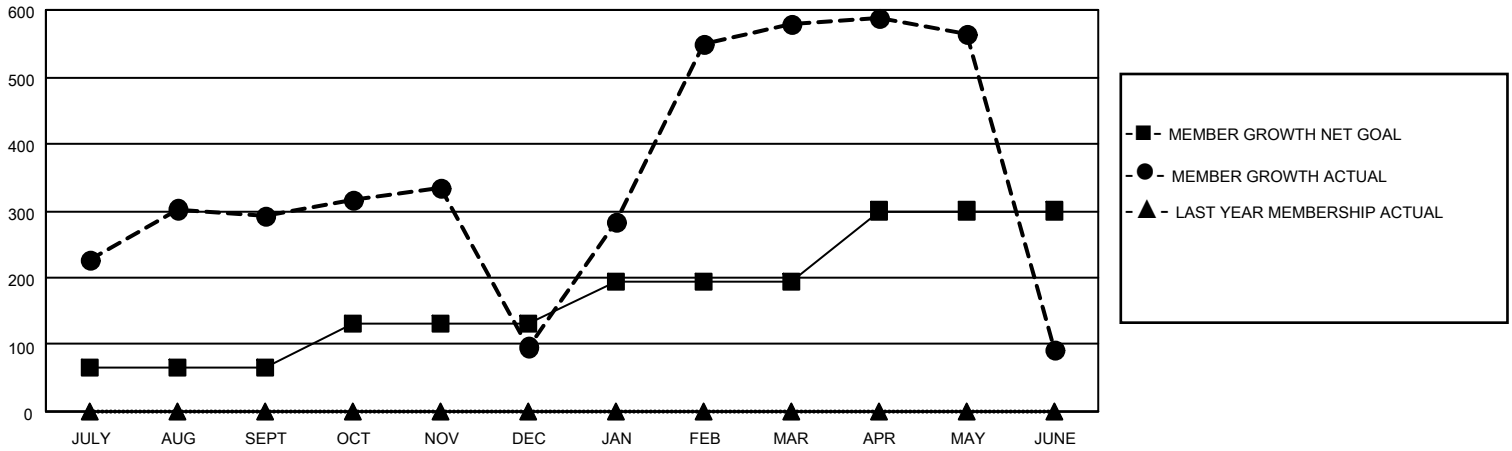
| Clubs                 |               |           |               |
|-----------------------|---------------|-----------|---------------|
| RESULTS FOR 2021-2022 |               |           |               |
| QUARTER               | NEW CLUB GOAL | NEW CLUBS | DROPPED CLUBS |
| JULY/AUG/SEPT         | 3             | 6         | 4             |
| OCT/NOV/DEC           | 3             | 0         | 4             |
| JAN/FEB/MAR           | 3             | 0         | 0             |
| APR/MAY/JUNE          | 1             | 5         | 4             |

| Members               |                        |                      |  |
|-----------------------|------------------------|----------------------|--|
| RESULTS FOR 2021-2022 |                        |                      |  |
| QUARTER               | MEMBER GROWTH NET GOAL | MEMBER GROWTH ACTUAL | DROPPED MEMBERS ACTUAL (including transfers) |
| JULY/AUG/SEPT         | 65                     | 477                  | 153  |
| OCT/NOV/DEC           | 65                     | 107                  | 291  |
| JAN/FEB/MAR           | 65                     | 588                  | 56   |
| APR/MAY/JUNE          | 105                    | 434                  | 897  |

**GOALS AND ACTUAL NEW CLUBS CUMULATIVE**



**GOALS AND ACTUAL MEMBERS CUMULATIVE**



**DROPPED CLUBS: 12**

170 CLUBS OF 200 ADDED 1 OR MORE NEW MEMBERS

GENDER DISTRIBUTION

DROPPED MEMBERS

|                |              |
|----------------|--------------|
| DECEASED       | 26           |
| CLUB CANCELLED | 225          |
| OTHER          | 1,146        |
| <b>TOTAL</b>   | <b>1,397</b> |

[CLICK HERE FOR CUMULATIVE MEMBERSHIP DATA](#)

|                      |                |
|----------------------|----------------|
| MALE                 | 4,216 (70.85%) |
| FEMALE               | 1,735 (29.15%) |
| NON BINARY           | 0 (0.00%)      |
| PREFER NOT TO ANSWER | 0 (0.00%)      |

TOTAL FAMILY UNIT MEMBERS 2,203

FAMILY MEMBERS PAYING HALF DUES 1,247